

seeing you through™

TRICO®

# Trico Force™



amazing performance  
[no — the wiper blade]





# Introduction to Trico Force™

- Newest multi-connection beam blade program in the industry
- Premium featured beam blade
- Offers the ability to fit 5 conventional and 7 specialty wiper arm connection types, including specialty European arms
- Improved wiping performance at higher vehicle speeds from the asymmetrical profile design
- A true global Aftermarket beam blade program, designed to service global design including LHD and RHD vehicles

# Aftermarket Beam Blade Families

## Trico TECH™



### Product Characteristics

Single length twin point coupler design – even load distribution

Bonded element – consistent wipe

Asymmetrical laid back profile provides windlift performance up to 160km/h

Natural rubber element – reliable & long lasting

Aerodynamic reduced noise design

### Applications / Availability

Blade Lengths 380mm (15") – 700mm (28")

Fits 5 conventional and 2 specialty arm types

11 assembly part numbers

Provided for selected vehicle markets

## Trico Force™



Twin point coupler design in 100mm, 150mm, and 180mm lengths – improved load distribution across lengths

Bonded element – consistent wipe

VorTec™ asymmetrical laid back profile provides windlift performance upto 240km/h

HighGlide™ treated natural rubber element – quieter, reliable & long lasting

Reduced reversal noise and rattle design

Blade Lengths 350mm (14") – 700mm (28")

Fits 5 conventional and 7 specialty arm types – including all European arms

12 assembly part numbers

Suits global vehicles styles



# Serviceable Arm Connections

## Conventional Arm Types



1. Standard Hook 9x3



2. Large Hook 9x4



3. 3/16" Side Pin



4. 1/4" Side Pin



5. 7mm Bayonet

## Specialty Arm Types



1. Bosch Side Pin



2. Bosch Short Side Pin



3. Bosch Push Button Type A (22mm)



4. Bosch Push Button Type B (18.5mm)



5. Valeo Push Button (19mm)



6. Valeo Pinch Tab



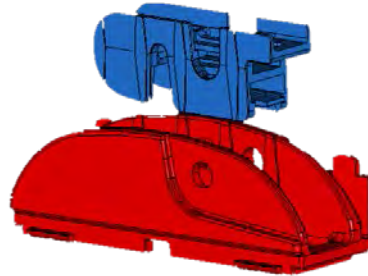
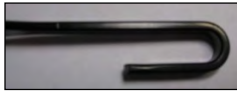
7. Valeo Pinch Tab Button

# Ease of fitment – 3 styles for 12 arms



## Conventional

1. Standard 9x3 Hook
2. 9x4 Hook
3. 3/16" Side Pin
4. 1/4" Side Pin
5. 7mm Bayonet



**Platform D**  
Pre-assembled

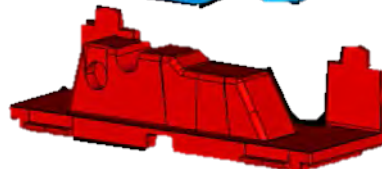
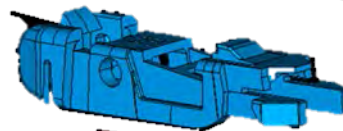
## Specialty - Others

1. Bosch Side Pin
2. Bosch Side Pin – Short
3. Bosch Push Button (22mm)
4. Bosch Push Button (18.5mm)



## Specialty

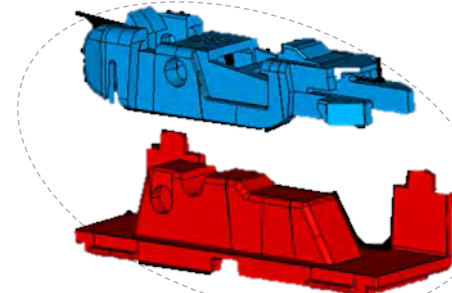
1. Valeo Pinch Tab
2. Valeo Pinch Tab Button
3. Valeo Push Button 19mm



**Platform B**  
Pre-assembled



◀ **Shim C**  
Add to Platform B



**Platform B**  
Pre-assembled

# On car look against competitors

**Trico Force Blade**



**Competitor Blade**



- Force features sleek designed air foils to provide controlled down force onto screen surface
- Force mounting mechanism is a low profile design for suited to late model vehicles
- Force blade section aesthetically looks to be more robust



# Positioned for Success

- Ultra premium beam blade
- Innovative aero-design
  - controls airflow and transfers it into maximum wiper/glass contact
- Industry's greatest coverage
  - Fits 12 distinct arm types
  - Coverage for two additional beam arm types, covering most European vehicles
  - Increase overall coverage Trico Beam blades to 98% of market demand
- Immediate success
  - TRICO Force sales have tripled month on month since introduction at major USA resellers



# Key Features and Benefits

- Powerful structure
  - VorTec™ aero-design spoiler
  - Multi-length coupler across range for added stability
- Exclusive HighGlide™ wiper element
  - natural rubber element treated for the smoothest, quietest wipe
  - superb durability in all conditions
  - severe weather performance
- Ease of assembly
  - less adaptors





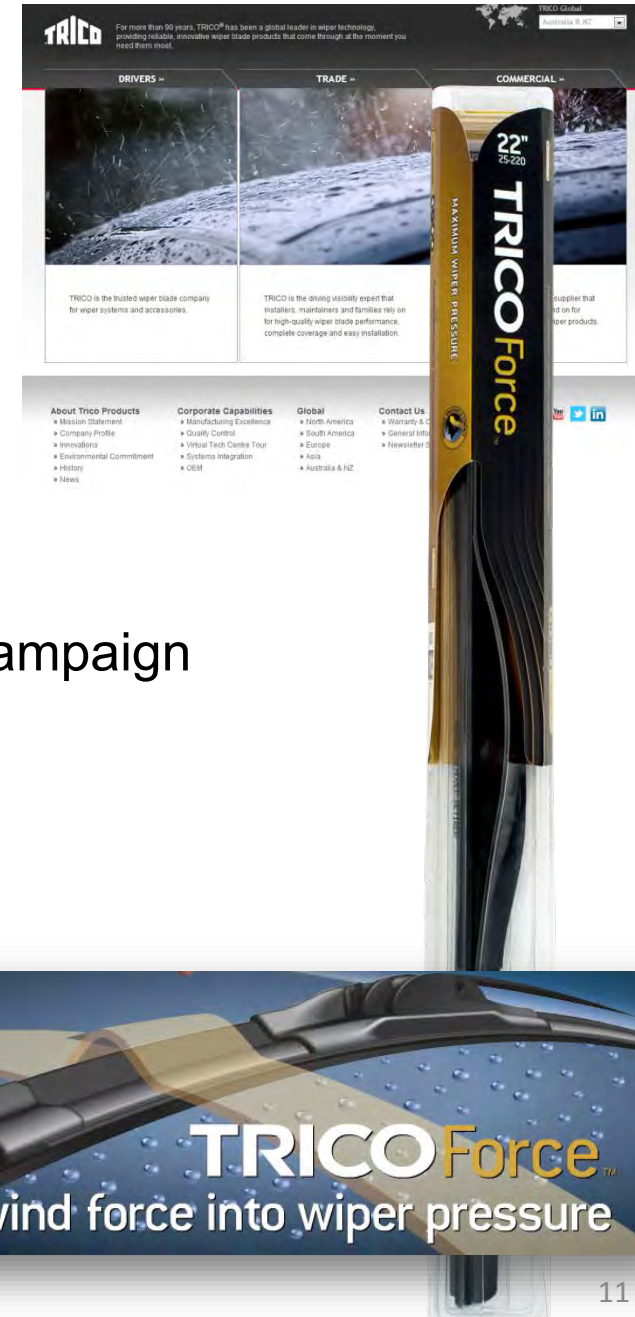
# Key Features and Benefits

- Increased vehicle application coverage
  - more vehicle coverage than any other universal wiper program with significantly less SKUs than Factory Replacement Programs
  - market leading coverage
  - Future proofed coverage for current AM and pending fall out of OE servicing
- Newest multi-connection beam blade program being introduced into the Aftermarket wiper segment
- A true market leading wiper program



# Trico Supported

- Leading wiper blade brand
- Electronic Application data updates
- National sales representative support
- Store Training
- National advertising – radio, print & catalogue campaign
- Strong trade engagement






# Planogram – 12 part numbers, 1000's of vehicles

Length		Part Number
millimetres	inches	
350	14	TF350
380	15	TF380
400	16	TF400
425	17	TF425
450	18	TF450
475	19	TF475
500	20	TF500
525	21	TF525
560	22	TF560
610	24	TF610
650	26	TF650
700	28	TF700



# Trico Force Merchandiser solution

						
Top Row	Part No	TF380	TF400	TF425	TF450	TF475
	Qty	3	3	3	3	3
						
Front Row	Part No	TF500	TF560	TF610	TF650	TF700
	Qty	3	3	3	3	3
						

Stock Included		QTY
TF380	Trico Force 380mm	3
TF400	Trico Force 400mm	3
TF425	Trico Force 425mm	3
TF450	Trico Force 450mm	3
T475	Trico Force 475mm	3
TF500	Trico Force 500mm	3
TF560	Trico Force 560mm	3
TF610	Trico Force 610mm	3
TF650	Trico Force 650mm	3
TF700	Trico Force 700mm	3
920/759	Header Card	1
920/755	Merchandiser Rack	1
920/756	Hooks	10

- 96% Car Parc Coverage





seeing you through™

TRICO®

# TRICO®

seeing you through™

